



N T H E

L E V E L

NAWIC, Greater Wichita, KS Chapter #120 Newsletter

January 2012

OFFICERS

President

Sue Gleason
The Waldinger Corp.
sgleason@comfort.waldinger.com

Vice President

Linda Geesaman
Central Air Group
lgeesaman@centralairco.com

Secretary

Chris Francis
Central Air Group
chris@rcprof.com

Treasurer

Rhonda Richardson
The Law Company
richardson@law-co.com

DIRECTORS

Edi Clark
White Star
edi@whitestarmachinery.com

Lori Payne
Andale Ready Mix Central
lori@andalereadymix.com

Ashley Thill
Zernco, Inc.
athill@zernco.com

IMMEDIATE PAST PRESIDENT

Bev Sauerwein, CIT
Sauerwein Construction
bev@sauerweinconstruction.com

NAWIC NEWS EDITOR

Linda Walton, CIT
Eby Construction
lwalton@ebycorp.com

Prose from the Pres, Sue Gleason

"The price of anything is the amount of life you exchange for it."
—Henry David Thoreau

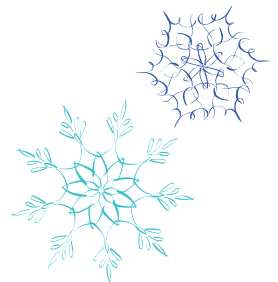
A new year is here and of course I have made my share of resolutions and lists of things that I want to do "better". Among the usual—eat healthier and exercise more—I have included some things like take the time to read and enjoy my family more. I feel that between work, our home, meetings, and overcommitting myself, I sometimes neglect my family. I don't always give them the quality time they deserve. I hope that each of you also find more time to enjoy your personal lives!

Having said that, our NAWIC Chapter is beginning a very busy time. We will be hosting an evening with AGC National President, Kris Young, on January 25. See the details in this bulletin and don't forget to get your reservations in to Linda Walton. Bev Sauerwein has done a great job coordinating this event. Please come and celebrate with an exciting Lady!

On February 11, we will be holding our annual Block Kids Contest. Edi Clark and Marjorie Awtrey have been working hard on this event and it is shaping up. They still need our help—especially with Sponsors and Judges—so please say yes when they contact you. **DON'T FORGET THE BLOCK SORTING PARTY AT KEY CONSTRUCTION ON JANUARY 24 AT 5:30 P.M.**

In March, we will be celebrating WIC WEEK. This is a special time, and there will be many events. Hopefully everyone will be able to make at least one of them. Linda Walton and Julie Kauffman have some great programs coming up. Watch the bulletin for these announcements and share them with guests!!

Best Wishes!
Sue Gleason, President





Upcoming Events

CHAPTER EVENTS:

Board Meeting

Tuesday, February 14, 2012, 5:00 p.m.
Comfort Systems
3052 All Hallows, Wichita, Kansas

Membership Meeting

Tuesday, January 24, 2012, 5:00 p.m.
Block Kids Prep Party
Key Construction
741 West Second, Wichita, Kansas

AGC National President Kris Young

“Strength Through Unity — Every Member Counts”
Wednesday, January 25, 2012, 5:30 p.m.
Larkspur Bistro, 904 E. Douglas, Wichita, KS

Block Kids

Saturday, February 11, 2012
Metropolitan Baptist Church
525 West Douglas, Wichita, Kansas

REGIONAL EVENTS:

2012 Spring Forum

April 20-21, 2012
Embassy Suites
St. Charles, Missouri

NATIONAL EVENTS:

2012 WIC Week

March 4-10, 2012

2012 National Convention

Denver, CO — August 29-September 1, 2012
Sheraton Denver Downtown Hotel

2013 National Convention

Bellevue, WA — August 28-31, 2013
Hyatt Regency Bellevue

January Meeting

Block Kids Prep Party

WHERE:

Key Construction
741 West Second
Wichita, Kansas

WHEN:

January 24, 2012
5:00 p.m.

COST:

\$10.00

RSVP:

lwalton@ebycorp.com or 268-3636



NEW

Member

Tricia Wilson

Icon Structures, Inc.

*Welcome to the
Greater Wichita, KS
Chapter #120!*

"Travel Broadens Your Mental Horizons"

I have been in many places, but I've never been in Cahoots.

Apparently, you can't go alone. You have to be in Cahoots with someone.

I've also never been in Cognito.

I hear no one recognizes you there.

I have, however, been in Sane.

They don't have an airport; you have to be driven there.

I have made several trips there, thanks to my friends, family and work.

I would like to go to Conclusions, but you have to jump.

I'm not too much on physical activity anymore.

I have also been in Doubt.

That is a sad place to go, and I try not to visit there too often.

I've been in Flexible, but only when it was very important to stand firm.

Sometimes I'm in Capable, and I go there more often as I'm getting older.

One of my favorite places to be is in Suspense!

It really gets the adrenalin flowing and pumps up the old heart!

**GR. WICHITA NAWIC CHAPTER
&
AGC OF KANSAS**

proudly present

**AGC National President
Kris Young**

***"Strength Through Unity -
Every Member Matters"***



**Wednesday, January 25
5:30 p.m.**

**Larkspur Bistro
904 E. Douglas, Wichita**

Heavy appetizers, cash bar



The Cold Within

By James Patrick Kinney

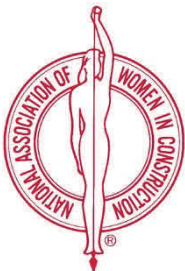
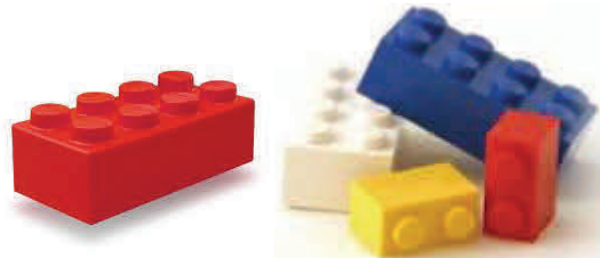
Six humans trapped in happenstance
 In dark and bitter cold,
 Each one possessed a stick of wood,
 Or so the story's told.
 Their dying fire in need of logs
 The first woman held hers back,
 For of the faces around the fire,
 She noticed one was black.
 The next man looking across the way
 Saw not one of his church,
 And couldn't bring himself to give
 The fire his stick of birch.
 The third one sat in tattered clothes
 He gave his coat a hitch,
 Why should his log be put to use,
 To warm the idle rich?
 The rich man just sat back and thought
 Of the wealth he had in store,
 And how to keep what he had earned,
 From the lazy, shiftless poor.
 The black man's face bespoke revenge
 As the fire passed from sight,
 For all he saw in his stick of wood
 Was a chance to spite the white.
 The last man of this forlorn group
 Did naught except for gain,
 Giving only to those who gave,
 Was how he played the game.
 The logs held tight in death's still hands
 Was proof of human sin,
 They didn't die from the cold without,
 They died from the cold within.

It's Almost Block Kids Time!

Saturday, February 11th

Metropolitan Baptist Church
525 West Douglas
Wichita, Kansas

**Be sure to contact
 Committee Co-Chairs
 Edi Clark & Marjorie Awtrey
 TODAY and ask them
 how you can help!**



CORE PURPOSE:
 To enhance the success of women
 in the construction industry.

CORE VALUES:
 Believe. Persevere. Dare.

Live with intention.
Walk to the edge.
Listen hard. Practice
wellness. Play with
abandon. Laugh.
Choose with no
regret. Continue to
learn. Appreciate
your friends. Do
what you love. Live
as if this is all there is.

—Mary Anne Radmacher

**NAWIC EDUCATION
FOUNDATION**

ANNUAL FUNDRAISER

FIRST PRIZE: \$2,000
SECOND PRIZE: \$1,000
THIRD PRIZE: \$500

TICKETS:
\$10.00 EACH OR
3 FOR \$25.00

**WINNER NEED NOT BE
PRESENT TO WIN!!**

CONTACT SUE GLEASON FOR TICKETS

2011—2012 Committee Chairs

Block Kids

Edi Clark, Co-Chair
Marjorie Awtrey, Co-Chair

Golf Tournament

Lori Payne

Membership

Ashley Thill

Motivational

Sue Schwatken

Newsletter

Linda Walton

Professional Education

Julie Kauffman, Co-Chair
Linda Walton, Co-Chair

Ways & Means

Bev Sauerwein

WIC Week

Bev Sauerwein, Co-Chair
Vicki Tucker, Co-Chair

Website

Christine Francis

