



NAWIC

THE REGION 6 TOOLBOX, JANUARY 2014

*As material for the
construction of our
building, I pledge
the agility of my
hands, the ability of
my mind, and the
integrity of my
heart.*

Message From Your Director

This is the newsletter to my Region that I so adamantly said I would GET done way before now. However! Thank you for your patience with me.

I have great respect for people that can write so eloquently and say exactly what I want to say only so much better. The following words are from Sarah Webb Director of Region 9.

“Yesterday I spent the day without electricity causing me to take notice of how something I take completely for granted, so greatly affects my ability to get things done. All day, I was completely hampered from accomplishing anything I had planned while wondering how I could so completely overlook this vital element. I guess it’s really true that you don’t appreciate what you have until its gone.

“The is not unlike our NAWIC association. We don’t take the time to recognize the impact that it has on so many aspects of our lives, because it’s just become the norm for us. But what if there were no NAWIC? How would that impact my life and my career? From the extraordinary resources available with this network of amazing women, the education that I apply daily at work and the social aspects that come with the Chapter, Regional and National events that I look forward to attending every year. It would be devastating, crippling for me.

“My power going out was an inconvenience, but I knew it would be restored eventually. The same cannot be said of NAWIC, if lost, it may be gone forever. While I know that it’s never pleasant to discuss such things as membership and raising dues, it is imperative to remember the impact that NAWIC has on our lives, and that we must make it a top priority to keep NAWIC viable and thriving for ourselves and those who come up after us.”

Thank you, Sarah, for allowing me to use your words.

Bev Sauerwein CIT



Beverly Sauerwein, CIT

Director
Sauerwein Constr. Co, Inc.
2055 S. Edwards
PO Box 13057
Wichita, KS 67213
Phone 316.942.0028
Fax 316.942.7045
Cell 316.640.4695

REGION CHAIRS

MEMBERSHIP

Vickie Nickel
vnickel@ibgagent.com

PEP & WIC WEEK

Debbie Speake
debbie@springfieldelectric.net

PR/MARKETING

Sonya Hayward
Shayward@arningco.com

BLOCK KIDS

Annette Parker
Aparker@waidb

DRAFTING

Sara Markt
Smarkt@riverbluff.com

SAFETY

Tina Davis
davisch@ur.com

CONSTR INDUSTRY

Maggie Eichholz
eeiggam_17@yahoo.com

In This Issue

Message from Director	1
Region Chairs	1
Upcoming Events	2
Chapter Spotlight	2-5
New Members	5
NEF	6
Forum Book Club	6
WIC Week Event	7

CHAPTER HIGHLIGHTS

SW MO Chapter #366

Georgia Powell, President
 We are off and running with the New Year. Chapter #366 is gearing up for the HBA Home Show, Block Kids, and WIC Week, not to mention our regular NAWIC business. Our January meeting we will be utilizing the Programs in a Box featuring some basic NAWIC information. We are also using this opportunity to socialize and enjoying some Nachos and homemade Tortellini soup. Our booth at the HBA Home Show (Jan 31-Feb2) will be promoting women in construction and also promoting block kids. We will have construction related items made out of building blocks, drawing for a pink tool bag, and lots of information regarding NAWIC. February 8th we will be hosting our Block Kids at Orchard Hills School. Sponsorships are coming in from our contractors, architects, and suppliers. Now we have to get the kids registered. CSI will be constructing a "bridge" with the help of the kids during the judging of the participants. WIC week is beginning to fill up including the kick off with the brunch at Rocheport and ending with Big Brothers Big Sisters Bowling for Kids Sake. Good luck to everyone with their Block Kid projects and we hope to see everyone at the WIC Week brunch kickoff.

St. Louis Chapter #38

2014 has begun and the St. Louis Chapter is on FIRE for NAWIC we have gained 2 new members. Welcome Gwendolyn Crimm of the Construction Career Center and Cynthia Smith Spangle of Finishing Contractors Association. Our goal is to add an additional 8 members before year end. Let's see if we can gain 6 additional members before August.

Here's what the St. Louis Chapter has lined up for the coming months.

- January 16, 2014 - Monthly Business meeting "Women in Construction" Becky Wall-Schultz of Paric
- February 7, 2014 - Block Kids Building Program - Green Park Lutheran School 9:00am - 11:30am
- February 20, 2014 - Monthly Business meeting Disparity Studies with focus on MDS - Lance LeComb with Metropolitan Sewer District and Elittle Media Group J- Bucks Clayton
- March 2, 2014 - WIC Week Regional Brunch - Les Bourgeois 11:00am (ALL ARE WELCOME TO JOIN)
- March 6, 2014 - Ice Cream Social at AGC Construction Careers Center 5pm
- March 3-7, 2014 WIC Week
- March 20, 2014 - Monthly Business meeting Ball Park Village Tour dinner at Mike Shannon's
- April 4-5 Spring Forum Kansas City Intercontinental Hotel on the Plaza
- April 17, 2014 - Monthly Business meeting Tour of Art Museum (Lunch Meeting)
- May 2, 2014 - St. Louis Chapter #38 NAWIC & ASPE Golf Tournament Forest Park

Regional Upcoming

2014 FORUM

April 4-5, 2014
 Intercontinental Ritz-Carlton
 Kansas City, Missouri

2014 WIC WEEK

March 2-8, 2014
 Region Brunch at Rockport, MO
 See flier on page 4

CHAPTER PRESIDENTS OF REGION 6

St. Louis #38

Kita Haynes kita.haynes@dukerealty.com

Gr. Kansas City #100

Brooke Schnurr brookeschnurr@live.com

Gr. Wichita #120

Cheryl Armstrong
 Cheryl.A.Armstrong@EMCIns.com

Topeka #142

Sue Schilling SueSchilling@kbsci.com

St. Joseph, Missouri #162

Sara Markt smarkt@riverbluff.com

Central Missouri #341

Maggie Eichholz eeigam_17@yahoo.com

SW Missouri #366

Georgia Powell gmpowell@sbcglobal.net

SE Kansas #382

Jenny McCool O'Dell mccoool@pittstate.edu

- May 15, 2014 - Monthly Business meeting TBD
- June 19, 2014 - Construction Industry Awards Night TBD
- July 17, 2014 - Membership Happy Hour TBD
- August 21, 2014 - Monthly Business meeting TBD

Reminder you don't have to be a member to attend any of the NAWIC events come join us and see if our organization is a fit for you professionally and personal.

Kita Haynes, President, St. Louis Chapter #38

Gr. Wichita Chapter #120

MEMBERSHIP Meeting - January 28th, 2014, 5:30 PM at Key Construction's Office 741 W. 2nd Street. We will be sorting blocks and doing preparations for the 2014 Block Kids Event. The Cost will be \$10. Hope to see everyone there, we can use all the help we can get on Block Kids!

BLOCK KIDS - February 8, 8:30 - Noon, Metropolitan Baptist Church. I have never heard of anyone leaving this event and not having a good time. It is a rewarding and often entertaining time, watching the kids show their "genius" and share their ideas and energy.

COMMITTEE REPORTS

MEMBERSHIP - Julie Kauffman is working on a Pictorial Directory for our chapter and is doing an awesome job. We still have a few ladies who have not responded to her request on complete a "fact sheet" and provide photo. As part of a national initiative, she is also using the pictures to build our Chapter #120 office building and Suites. National encourages us to recruit woman from all disciplines within the construction industry and we have several suites we still need to fill. Please promote NAWIC every chance you get.

- WIC Week - Lori Payne is chairing this committee is firming up several events for our NAWIC Recognition week. I believe there might be a "shower" in the forecast and should be very exciting. WIC Week is March 2-8 this year so mark your calendars and watch for more from Lori.
- Golf Tournament - Bev Sauerwein is heading up the committee for our annual Educational Fund Raiser. It will be held August 18th at Crestview Country Club this year. If you have a strong interest in Golf and would like to help, I know she can use the help. Please let her know if you are interested.
- INDUSTRY DAY- Following up with Ways and Means, we are going to move forward with a new initiative this year. We will be offering an all day educational event to Engineers, Architects, Construction Owners, Project Managers and all walks of professional in the construction industry. The event will be eligible for Continuing Education Credits for Engineers and hopefully some of the others requiring additional education. I will be forming a committee in February and hope to have the event Mid May. There are several formats we can use for this and I am seeking all the ideas and assistance I can get. Some of the best events are those the include a Panel Discussion with prominent people on a panel, willing to respond to questions from the floor (some pre-arranged questions to get the meeting started). It becomes very interesting when we can get professionals willing to talk opposing views or those qualified to answer the caveats of legal or financials issues within the industry. The event will be open to anyone wanting to attend and there will be a minimal charge (thus a fund raiser to our chapter). If you are familiar with educational events, I would most certainly welcome the assistance, as I will be heading up this new committee. Please do not hesitate to let me know your ideas and interest in joining this committee.
- PROGRAMS - As mentioned above, the January meeting is the 28th - Block Kids; In February, our speaker will be Brooke Carpenter and she will be talking on all faucets of office etiquette including phone and email.

Topeka Chapter #142

Topeka Chapter is gearing up for our Construction Industry "Mix and Mingle" to be held Monday evening, January 20th. We are also preparing for our Block Kids Contest which will be Wednesday,

February 5th, at McCarter Elementary School

Sue Schilling, President

Central Missouri Chapter #341

Hello from Central MO...

Brrrr! Dealing with the extreme cold and the resulting cold and flu bug that has run rampant through our area. We cancelled our January meeting due to all of the issues! We are working hard to spread the good news about the benefits of NAWIC membership and have increased interest in our meetings. Several new guests have attended and expressed interest in joining. Quoting Vickie Nickle our Regional Membership Chair "Now it's time to reel them in". We appreciate Vickie's help and encouragement in our efforts. We are looking forward to finish planning our WIC Week activities in the next week! Look out for more news from Central MO!!

St. Joseph Chapter #162

The St. Joseph Chapter recently held their January Membership meeting and enjoyed a wonderful presentation on Lean Construction and changes to LEED, presented by Tiffany Moore of Built Construction in Kansas City, MO. We even had two prospective members in attendance at the meeting! We are now gearing up for our Block Kids event which will be held on Saturday, January 25th at Hillyard Technical School. As always, we are all looking forward to the event and are working hard to get lots of students there to participate. Our February program will be a presentation on either insurance or bonding, and we are looking at future meetings with a presentation on BIM (Building Information Modeling), a demo on concrete finishing, as well as construction tours of two local elementary schools currently under construction.

Gr. Kansas City Chapter #100

UPCOMING PEP PROGRAMS:

Wednesday, February 19, 2014 | TIME: Registration & Networking 11:30 am | Lunch & Program at Noon | LOCATION: Brio on the Plaza, 502 Nichols Road, Kansas City, MO | COST - \$25.00 | RSVP by Friday, Feb. 14th to Karra McGreevy – karra_m@srains.com

JOINT MEETING WITH AMERICAN SOCIETY OF PROFESSIONAL ESTIMATORS HEARTLAND CHAPTER #32

PROGRAM: Experience Modification Rate (EMR) – Understanding how it affects the Bottom Line. See attached flyer with more information...

Speaker: Vicki Simpson, Insurance Manager at Performance Contracting Group.

Understanding your EMR and monitoring it regularly is key in reducing your Workers' Compensation costs. It is also an excellent measure of how your loss prevention and control practices stack up to others in your industry. It has a direct correlation to how much you pay in Workers' Compensation Premiums and this can affect your bottom line.

Sunday, January 26, 2014 – [Annual Super Bowl Bowling Tournament](#) (as always the Sunday before the big game) – NEW VENUE: Park Lanes at 7701 Renner Road, Shawnee, KS 66217 – Contact Vicki Simpson for additional information vicki.simpson@pcg.com

[See attached flyer & registration or following the following links to the chapter's website:](#)

<http://www.kcnawic.org/bowling-registration.html>

<http://www.kcnawic.org/bowling-sponsorship-sign-up.html>

Saturday, February 8, 2014 – [25TH Annual Block Kids Building Program](#)

We have reached our maximum number of participants - 150 1st – 6th grade kids! WOW! Now we need your help to volunteer as a judge – no experience necessary. We also need goodie bag give-a-ways. Contact Jennifer Lyon, Chair for additional information jennifer.lyon@jedunn.com.

SE Kansas Chapter #382

We held our chapter meeting on Monday, January 13

We discussed our committees and request for additional members for these committees. Block kids committee is working with Dennis Audo to hold our first official Block Kids!!!! Dennis told me earlier this week that PSU has been doing Block kids for 7 years now. We are excited to be a part of this collaboration for BlockKids.

We have a committee that is working on chapter Thank Yous and they will be going out soon. I sure hope we don't forget anyone!

The WIC Week committee discussed activities for the week. Webinar (GoToMeeting), Girl Scout Badge camp, Tables at local school during lunch, and Lunch with the SE Kansas Ladies.

Hearts and Hammers work days are set for Saturday, April 12th and Saturday, April 19th. SE Kansas NAWIC will sponsor a house as they did last year. More to come as the details are ironed out.

Ann Petersen has worked with Mary Wehrman (PSU computer support) to create a survey in Survey Monkey for members and non-members. The goal of the survey is to collect the data so this chapter can give them what they want out of their membership. We want to hear why they joined. What they are interested in learning, doing, seeing! The survey also asked about fundraising ideas. If/When the National NAWIC dues go up, this chapter wants to raise enough money that we can keep our dues the same (by reducing our chapter dues). IT was hard enough getting or current members to drop that money. We will have a more difficult time if the dues go up.

The Christmas party was cancelled twice in December for bad weather. We have rescheduled it for Wednesday, January 22.

SE Kansas is looking at Google Docs or Dropbox to place pictures and documents. Many emails get returned to me if I have too many attachments. This will be a great way to minimize our emails.

There was a article in the Midwest Construction magazine in December regarding women in construction/NAWIC/PSU. Although the article focused on PSU it gave women in construction some publicity. Bill Strenth shared his copy with me. The magazine did not interview me, the used the press release PSU put out last fall. In any case, it did give women in the industry publicity. After reading this article I realized that any event NAWIC Chapters hold, they should send a press release to magazines and journals. This will help bring awareness to NAWIC!!!! I will begin compiling a email/fax list of media contacts. Please request each chapter to forward any contacts they have to me and I will put them all together and share them with our region. This effort to inform the industry and media about our NAWIC activities will bring awareness of the women in construction!

Jenny McCool O'Dell

Welcome to Region 6 NAWIC

St. Louis	Gwendolyn Crimm Cynthia Smith Spangler	Construction Training School 5 Hobbs Mill	gcrimm@stl-cts.org cspangler@finishingcontractors.org
Kansas City	Lisa Messinger Mary Schneider Kimberlee Mason	Kleinfelder Brier Payne Meade Ins. Road Builders Machinery & Supply Co., Inc.	lmessinger@kleinfelder.com mschneider@ggins.net
Central Mo	Vicktoria Mundahl Kelley Heckemeyer	United Rentals Missouri University of Science and Technology Student	kmason@roadbuildersmachinery.com mundahl@ur.com kannheck@live.com

NEF Update

I have a challenge for each and every one of you! Learn about [STEM](#).

You're probably thinking, "What is STEM?" Well, keep reading and you just might find out. STEM is a term used in education for Science, Technology, Engineering and Math. It is typically used to refer to curriculum choices in schools from K-12 through college to help students learn about the career opportunities in the fields of Chemistry, Computer Science, Engineering, Physics, Life Sciences and Social Sciences.

Still confused? STEM programs in K-12 schools typically have a real-life career component. They may include inviting industry professionals into their classroom to talk about how math and science courses helped them become the professional they are or may include hands-on activities that can be applied to the real life experiences they will have in their careers.

Are you seeing a connection to NEF yet? Our Block Kids, Cad Drafting and ASP programs are all excellent examples of STEM programs. For years we have struggled with finding ways to get our NEF programs into schools, but I think we have been going about it wrong all this time. We typically ask a school that one of our member's children attend or someone has a friend that works at a school that knows somebody, etc. I challenge all of you to contact your local school district offices and ask if they have a STEM program. Many districts now have administrative staff dedicated to their STEM programs that are constantly looking for new activities and presenters for their classrooms. Other districts have advisory councils made of industry professionals that help their STEM programs keep up with the new advances in these career paths.

But I don't have time? Yes, you do. Step away from Facebook for 10 minutes and make a phone call. Setup a meeting and talk about NEF with the STEM staff that you are now connected with. Don't know anything about the NEF programs? That's what I'm here for. That's what the NEF office is here for. We can help.

Because every conversation in NAWIC these days seems to be about membership, here's my membership pitch. We can't increase membership if we don't have new people coming into our industry. How do we get more people interested in construction? Convince them when they are 9, 10, 11 years old that construction is a fun, exciting and challenging career. I realize that a 9 year old learning about construction today, probably won't be a member for another 10 years, but we have to start at the beginning. I have and I look forward to sharing with you my experiences with STEM education at Region 6 Forum!

Katie Loughmiller
NEF Liaison
Topeka Chapter #142
Instructor
Kansas State University

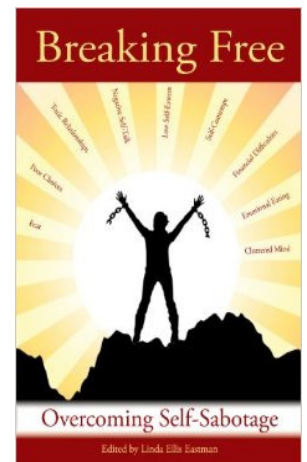
REGION 6 BOOK CLUB FORUM 2014

A powerful must-read book for women involving relationships, self-awareness, building self-esteem, self-talk, overcoming fear, and more! Written by 23 international coaches and consultants including Juracy Johnson, Rachela Leonello, Michelle Lewis, Hueina Su, Gabriela Eikeland, Janet Stevenson, Christine Sopa, Dr. Claire Maguire, Di McLanachan, Karen Donald, Janet Christensen, Barbara Cormack, Denise Norberg Johnson, Lisa Montalva, Amaryllis Alexander, Anton Gayton, Lori Ruff, Felicia Shaw, Vanessa Shaw, Mala Shah, Dr. Angela Clack, Linda Rose Mongell, and Dawn Campbell.

Available at Amazon.com for \$15.67 + shipping or pwnbooks.com for \$19.95 + shipping

We will be discussing the book at Saturday Breakout sessions at Forum.
Please let me know if you are interested in participating. Contact me for further information.

Sandra Carter, CIT
E-mail: src45@sbcglobal.net
Cell: 314-223-5741



Date: Sunday, March 2, 2014

Time: 11:00 AM



WIC WEEK 2014 Region 6 Joint Chapter Networking



RSVP BY FEBRUARY 25TH:

**Sandra Carter, CIT
CELL 314-223-5741**

**BRUNCH COST
RESPONSIBILITY OF**

LOCATION:

**Les Bourgeois
Blufftop Bistro
12847 SR BB**

Kick-off WIC Week 2014

Join us for a fun,

laid back,

networking experience.

Bring a friend, coworker,

prospective member.



NAWIC

